

elvia



S46 SI² Classic_[6700]

INNOVATIVE TECHNOLOGIES_
ELVIAL PRE-ANODIZING 2IN1_
ELVIAL I² INSULATION TECHNOLOGY_
BE DIFFERENT.



S46 Si² CLASSIC is one of ELVIAL's best selling aluminium profile solutions. It comes in both lift and slide and sliding editions and responds to various design requirements.

Being versatile and aesthetically balanced, it has been integrated into numerous high profile and private residence projects. The system's sash width is only 46mm making it a beautiful and highly functional option for your own project.



DESIGN

The S46 SI² CLASSIC bears the seal of the ELVIAL design philosophy. It's straight lines and austere style allow it to fit design concepts that put an emphasis on the abundance of natural light. Spaces look and feel ample and comfortable with this fascinating design detail.

Attention to Details.



POWERFUL DESIGN
ELVIAL S46 SI2 differs. It sports a 56mm mullion, far narrower than the 89mm one of standard profiles. We chose the narrow design to create the maximum access to the view that will surround you. There's no such thing as 'too much' when it comes to enjoying the view.



FIRM AND MINIMAL
The solution still complies to the strictest standards without compromising efficiency. The narrow mullion bears a 55mm outer reinforcement in order to adhere to higher static requirements and cover the most demanding wind pressure.

Extra Features.



INNER HANDLE
The S46 SI² CLASSIC bears the mark of our holistic approach to design. The handles on the inside are minimal and lean. Function and form are in perfect harmony.
Lift & Slide edition



INNER HANDLE
Handles are so sophisticated that render a unique style to any architectural design. Function and appearance are in perfect harmony.
Sliding edition



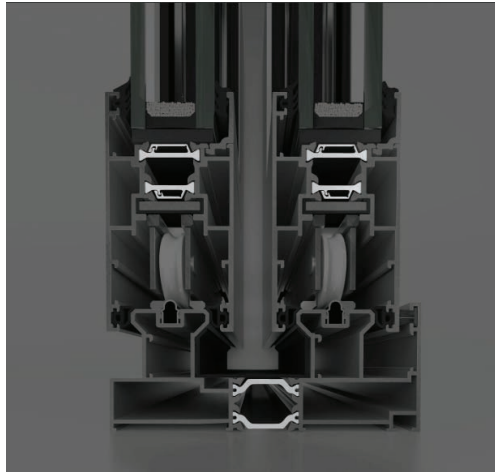
OUTER FLUSH PULL
The profile's flush pulls on the outside are barely there. The frame looks even and sleek from every angle. Function and form are in perfect harmony.
Sliding edition



The
TECHNOLOGY

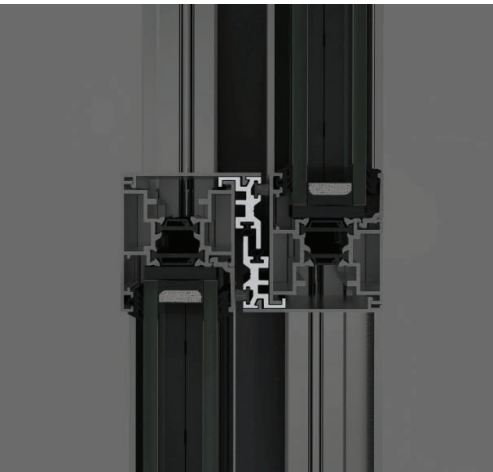
This aluminium system is one of the most popular in its category. It is more than certain that you too will appreciate its efficiency as have many happy customers before you.

THE THERMAL INSULATION



22MM INSULATING BARS

Wide insulating bars of 22mm with glass fiber reinforcement 25%, are applied to all system profiles offering high thermal insulation levels and extra rigidity.



CUSTOMIZED INSULATING BARS

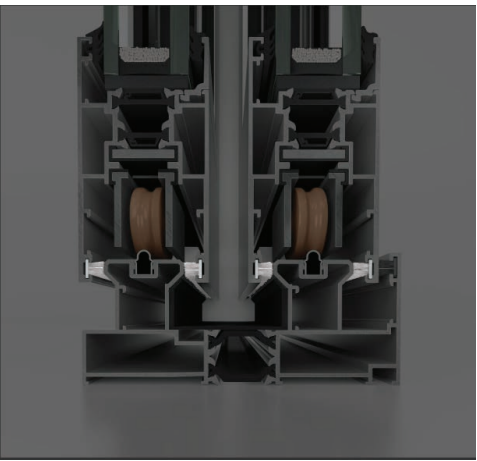
The customized insulationbars are set both in the central zone and the middle mullion so the aluminium system is energy efficient and performs within ELVIAL standards.

THE TOTAL SEALING SYSTEM



EFFICIENT PROTECTION

The profile is fitted with customized gaskets that keep your space neat and water tight.
Lift&Slide edition



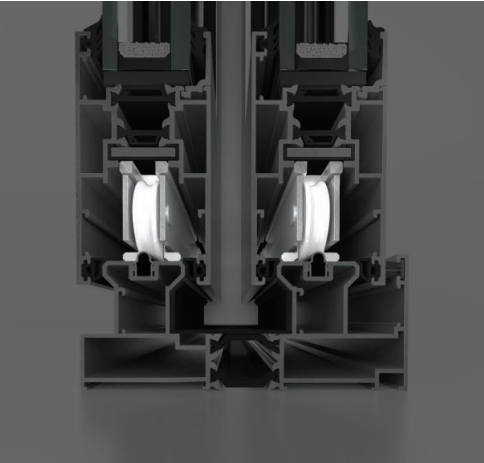
EFFICIENT PROTECTION

The profile features a specialLy developed combination of customized brushes with sealing membrane that ensure the efficient protection from wind and water
Sliding edition

The
TECHNOLOGY

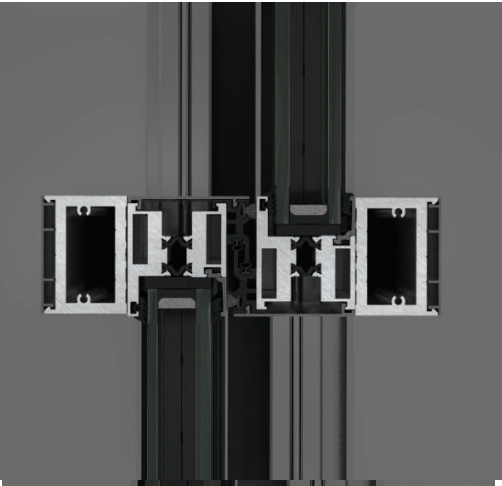
This collection has been proved to stand the test of time and has many devoted witnesses of its value.

DURABILITY FOR A LIFE TIME



HIGH QUALITY ROLLING

This solution can bear up to 250 kg per sash and maintain quality rolling. It is a perfect fit for spaces with wide openings and lets you enjoy your view.



MAXIMUM STRENGTH

There are various reinforcements available in this system designed to match the wind pressure requirement you will prescribe.

THE SECURITY




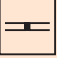


ANTI-LIFT

Your aluminium system is equipped with a specific anti-lift mechanism to prevent intrusions.



The
IDENTITY

It's a feeling. It's precious. What should be kept outside -noise, water, wind- is kept outside. What's inside is safe and sound. This is where we set our boundaries and keep them intact.

System depth		46 mm
Visible height		121.8 mm
Facing width middle mullion <i>Successive</i>		56 mm
Facing width middle mullion <i>Meeting Style</i>		189 mm
Facing width middle mullion <i>Fixed T</i>		56 mm
Max sash height		2.600 mm
Max sash width		2.000 mm
Max sash weight		200 kg
Glass thickness		29 mm

The
PERFORMANCE

Create the maximum impact.
Enjoy less frame and more of everything else; warmth, comfort, light and scenery

I

COMFORT		
Air Permeability	up to	4
Water Tightness	up to	Class 4A
Wind Load Reduction	up to	C2 / B2
Sound Reduction	up to	36-38dB

O

The FINISHINGS

The right choice of color may uplift the aesthetic result and add value to the building image, contributing, at the same time, to the well-being of everyday users.

There are 2 basic technologies developed for surface treatment. Powder Coating and Anodizing.

BUT if you want to achieve the ultimate combination of these 2 methods the solution is given by Pre-anodizing.

ELVIAL PRE-ANODIZING 2IN1

- // Zero waiting time
- // Spotless environment
- // Robotic handling

THIS IS WHAT ELVIAL Pre-Anodizing 2in1 is all about.

ELVIAL owns the first in Greece and one out of seven worldwide, fully automated serial pre-anodizing and powder coating lines.

ELVIAL Pre-Anodizing 2in1 facility is robotic. No human hand meddles with the materials; the production environment is free of dust and other aggravating factors.

The profiles are subdued to an electrochemical procedure identical to that of anodizing.

STRONGER THAN TIME. STRONGER THAN ELEMENTS.

The aluminum profiles are placed in an underground tunnel and submerged in a sulfuric acid solution. Pre-anodizing produces an anodic substrate on the surface of the aluminum profile that protects it from corrosion.

Then the profiles are serially painted, eliminating waiting time, whilst the pores on the aluminium surface of the profile are completely sealed.

Pre-anodized aluminum profiles are automatically categorized as **Sea Proof Plus**.

ELVIAL Pre-Anodizing 2in1 is uniquely combined with Class 2 Super Durable powder coatings.

Our
COLOR COLLECTION

Colors can be playful and eye catching. They can be soothing and encompassing. The hues and textures are of utmost importance because they highlight the design.

We form them keeping in mind prominent architects' preferences and international trends.

This is
ELVIAL COLOR COLLECTION
[Favorites_ Express and Favorites]



CLASS 2
SUPER DURABLE

Do the right choice.

Combine pre-anodizing with class 2 powder coating colours. Achieve maximum anti-corosion and radiance resistance, even under extreme sun light.

The super durable powder coatings are 3 times more resistant to sun radiation and render the profiles practically indestructible.



Our SUPPORT

WE ARE HERE FOR YOU

We always search for technology, for design and beyond that we search for excellence.

We collaborate as a strong team, in order to give you that.

We answer to technical or non-technical questions, we offer a wide range of products always having in mind that you control unique and demanding projects.

We act quickly and instantly because everything we do impacts on your customers; so you need to operate effectively.



ELVIAL FOR YOU

- // Technical manuals
- // dwg and BIM files
- // Section drawings
- // Construction plans and structural calculations
- // Customized solutions in order to fit the specifications
- // Certificates for Uf, wind loads, water tightness, air permeability

However all that matters in the end is the delivered quality. ELVIAL has a certified network of partners, with extensive experience and excellent training that will complete projects in accordance with timelines and high quality standards.

ELVIAL FOR YOUR CLIENTS

- // B2C brochures
- // Samples for colors in order to see and feel finishings and textures
- // Product boxes
- // Reference projects from our product collections



elvial

elvial.com

While every effort has been made to ensure information accuracy,
ELVIAL bears no responsibility for typographic errors or omissions.
Copyright © ELVIAL 2023.